



OEM/ODM

For Gas Water Heater, Electric Water Heater &
Glass Enamel Tank



ABOUT US

With over 25 years of experience in the water heating industry, we bring deep technical expertise and a strong understanding of market dynamics across Gas Water Heaters, Electric Water Heaters, Heat Pumps, Storage Gas Water Heaters, and Solar Water Heating systems.

At Auron, we consistently stay ahead by delivering reliable, high-quality solutions. Backed by proven expertise, we support our OEM/ODM partners with a comprehensive product range- including Instant Gas Water Heaters, Electric Water Heaters, Heat Pumps, and Glass Enamel Tanks.

Our multidisciplinary team of engineers, material scientists, and quality specialists ensures every product meets the highest standards of performance and durability. By aligning with global trends, adopting advanced technologies, and integrating real user insights, we enable our partners to stay competitive and future-ready.

Proudly Made in India, our manufacturing is driven by stringent quality controls, modern production processes, and rigorous testing protocols- ensuring consistent, long-lasting performance. We offer end-to-end OEM/ODM solutions, supporting premium water-heater brands from concept and design to manufacturing and post-sales success



OUR VISION

To become a leading and trusted name in the water heating industry by delivering innovative, high-performance solutions while setting new benchmarks in quality and reliability.

We aim to strengthen domestic leadership and expand globally, while actively contributing to the growth of Make in India manufacturing.

OUR MISSION

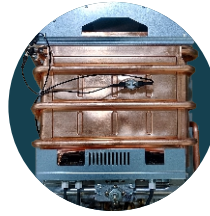
Our mission is to deliver premium-quality water heating solutions through advanced manufacturing, strict quality control, and continuous innovation.

We are committed to developing reliable, efficient, and low-maintenance products that meet evolving market demands and regulatory standards.

By providing end-to-end OEM/ODM support—from product development and customization to testing and after-sales—we enable our partners to build strong, competitive, and trusted brands.



Instant Gas Water Heater



Oxygen Free Heat Exchanger

6, 8, 10, 14, 16 Ltr.



- Automatic ignition
- Summer/Winter Switch
- Child safety lock
- Flame failure device
- Temperature Protection Device
- 20 Minute timer function



Ultra Low Pressure Water Valve

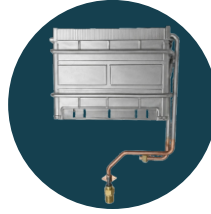


High Pressure Water Valve

Technical Specification

Model	A6	A8	A10	A14	A16
Capacity (LPM)	6	8	10	14	16
Heat Output (Kw)	12	16	20	28	32
Gas Consumption LPG (kg/h.)	0.9	1.25	1.5	1.85	2.3
Gas Consumption NG (m3/h.)	1.2	1.6	2	2.4	3
Gas Pressure - LPG/NG	LPG 28 m bar / NG 18-20 m bar				
Minimum-Maximum working pressure	0.25 bar - 6.0 bar				
Inlet Outlet size	1/2"				
Gas Connection	9.5 mm Gas Hose				
Rated Voltage (V)	DC 1.5 V (2 Batteries)				
Size	440x300x130	550x330x190	610x350x180	610x350x180	750x390x190

Instant Gas Water Heater



Tin Coating Heat Exchanger

6, 8, 10, 14, 16 Ltr.



- Automatic ignition
- Summer/Winter Switch
- Child safety lock
- Flame failure device
- Temperature Protection Device
- 20 Minute timer function



Ultra Low Pressure Water Valve



High Pressure Water Valve

Technical Specification

Model	A6	A8	A10	A14	A16
Capacity (LPM)	6	8	10	14	16
Heat Output (Kw)	12	16	20	28	32
Gas Consumption LPG (kg/h.)	0.9	1.25	1.5	1.85	2.3
Gas Consumption NG (m3/h.)	1.2	1.6	2	2.4	3
Gas Pressure - LPG/NG	LPG 28 m bar / NG 18-20 m bar				
Minimum-Maximum working pressure	0.25 bar - 6.0 bar				
Inlet Outlet size	1/2"				
Gas Connection	9.5 mm Gas Hose				
Rated Voltage (V)	DC 1.5 V (2 Batteries)				
Size	440x300x130	550x330x190	610x350x180	610x350x180	750x390x190



Nuvo

6, 10, 15, 25 Ltr



Porcelain Enamel
Glass Lined Tank



PUF
Insulation



Triple
Safety



Glass lined
Incoloy Element



ABS
Plastic Body



8 Bar
Pressure



Heat Retention
Technology



Sacrificial
Magnesium Anode



Warranty
On Inner Tank

Technical Specification

	6 SQ	10 SQ	15 SQ	25 SQ
Model	6 SQ	10 SQ	15 SQ	25 SQ
Capacity (Ltr)	6	10	15	25
Heating Element (kw)	2	2	2	2
Power	230/1/50			
Maximum working pressure	0.8 Mpa			
Inlet Outlet size	1/2"			
Size	315x315x305	365x365x303	395x395x343	445x445x386
Body	ABS Plastic body			



Vetra

6, 10, 15, 25 Ltr



Porcelain Enamel
Glass Lined Tank



PUF
Insulation



Triple
Safety



Glass lined
Incoloy Element



ABS
Plastic Body



8 Bar
Pressure



Heat Retention
Technology



Sacrificial
Magnesium Anode



Warranty
On Inner Tank

Technical Specification

Technical Specification				
Model	6 SQ	10 SQ	15 SQ	25 SQ
Capacity (Ltr)	6	10	15	25
Heating Element (kw)	2	2	2	2
Power	230/1/50			
Maximum working pressure	0.8 Mpa			
Inlet Outlet size	1/2"			
Size	315x315x305	365x365x303	395x395x343	445x445x386
Body	ABS Plastic body			



Hotve

10, 15, 25, 50 Ltr



Porcelain Enamel
Glass Lined Tank



PUF
Insulation



Triple
Safety



Glass lined
Incoloy Element



Sacrificial
Magnesium Anode



8 Bar
Pressure



Heat Retention
Technology



Warranty
On Component



Warranty
On Inner Tank

Technical Specification

	10 V/H	15 V/H	25 V/H	50 V/H
Model	10 V/H	15 V/H	25 V/H	50 V/H
Capacity (Ltr)	10	15	25	50
Heating Element (kw)	2	2	2	3
Power	230/1/50			
Maximum working pressure	0.8 Mpa			
Inlet Outlet size	1/2"			
Size	320x403/ 320x410	320x503/ 320x513	320x606/ 320x723	410x625/ 410x625
Body	MS Powder coated with ABS Top/Bottom			



Hotve

70, 100, 150 Ltr



Porcelain Enamel
Glass Lined Tank



PUF
Insulation



Triple
Safety



Glass lined
Incoloy Element



Sacrificial
Magnesium Anode



8 Bar
Pressure



Heat Retention
Technology



2
Years
Warranty
On Component



5
Years
Warranty
On Inner Tank

Technical Specification

	70 V/H	100 V/H	150 VFS
Model	70 V/H	100 V/H	150 VFS
Capacity (Ltr)	70	100	150
Heating Element (kw)	3	3	3
Power	230/1/50		
Maximum working pressure	0.8 Mpa		
Inlet Outlet size	1/2"		
Size	410x783/ 410x875	410x1060/ 410x1060	530x1230
Body	MS Powder coated with ABS Top/Bottom		



100, 150, 200, 300, 400, 500 Ltr.

- Glass enamel coated inner tank
- 50mm PUF insulation
- High pressure withstand up to 8.0 bar
- Ideal for heat pump/Solar Water Heater Buffer Tank
- T/P Valve
- Magnesium Anode
- Pressure Relief Valve



Technical Specification

Model	100 VFS	150 VFS	200 VFS	300 VFS	400 VFS	500 VFS
Capacity (Ltr)	100	150	200	300	400	500
Heating Element (kw)	3	3	3	4	4	3kwx2 = 6kw
Power	230/1/50					
Maximum working pressure	0.8 Mpa					
Inlet Outlet size	1/2"	3/4"	3/4"	1"	1"	1"
Circulation connection	3/4"	3/4"	3/4"	3/4"	3/4"	3/4"
T/P Valve Connection	3/4"	3/4"	3/4"	3/4"	3/4"	3/4"
Drain Connection	1/2"	3/4"	3/4"	3/4"	3/4"	3/4"
Size	470x1040	520x1230	520x1590	650x1455	700x1595	700x1895
Weight (Kg)	40 kg	50 kg	66 kg	89 kg	118 kg	155 kg



Auron Innovtech LLP

 48 - 49, Shyam Industrial Estate, Canal Road,
Changodar, Dist. Ahmedabad- 382213

 +91 99241 48399

 auroninnovtech@gmail.com